

1 2 3 4 5 6 7 8

REV	LOCATIONS	DESCRIPTION	DATE	REVISER	APPD

A

B

C

D

E

F

A

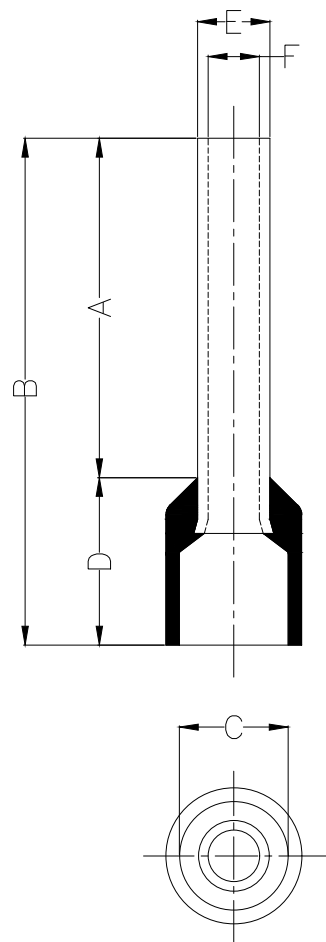
B

C

D

E

F



Notes:

- Material: Copper
- Insulator: PVC (UL 94V-0)
- Plating: Bright tin plated
- Maximum temperature: 75 °C
- Maximum electrical rating: 600V
- Wire range: 2.5mm<sup>2</sup> / (14AWG)

Dimensions					
A	B	C	D	E	F
±1	±1	±0.5	±1	±0.5	±0.5
8.0	15.1	4.0	7.0	2.5	2.3

PART NO.	Color Of Insulator
FET02-002500800ARD8	Red
FET02-002500800ABU8	Blue
FET02-002500800ABK8	Black
FET02-002500800AWH8	White
FET02-002500800AGY8	Gray

THIRD ANGLE PROJECTION

DESIGN UNITS mm

SCALE: 5:1    SIZE: A4

GENERAL TOLERANCES (UNLESS SPECIFIED)	
X. ±0.30	X.* ±5'
X.X ±0.20	X.X' ±2'
X.XX ±0.15	X.XX' ±1'
X.XXX ±0.10	X.XXX' ±0.5'

APPROVE BY LEO	DATE 19/JAN/21
CHECKED BY GISELLE	DATE 19/JAN/21
DRAWN BY PYD	DATE 19/JAN/21

PART NO. FET02-002500800AXX8	ITEM NO. FET02	 Building Technology Cornerstone
TITLE Cord end terminal		
THIS DRAWING CONTAINS INFORMATION THAT IS PROPRIETARY TO TXGA INDUSTRIAL ELECTRONICS(S.Z)CO.,LTD AND SHOULD NOT BE USED WITHOUT WRITTEN PERMISSION		REV 0    SHEET NO. 1/1

1 2 3 4 5 6 7 8